

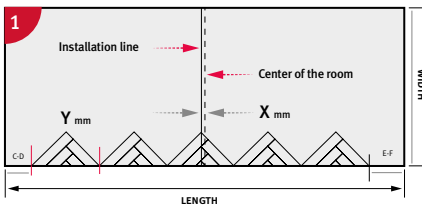


Herringbone Installation instructions for Wood

Important information

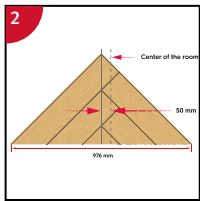
- The flooring must be acclimated a minimum of 24 to 48 hours prior to installation in the room where the installation will take place
- In rooms larger than 10 x 10 m (100 m²), the flooring must be installed in smaller sections with expansion joints
- The distance to walls and other permanent pieces of construction elements (such as pillars and kitchen islands) should be approximately 1,5 mm per meter of the length and width of the floor (width 10 m = 15 mm expansion gap).
- Never install very heavy pieces of furniture such as kitchen islands/cabinets on top of the flooring
- The indoor climate should have a temperature between 15-23 °C and relative air humidity between 30-60% (according to Swedish Standards Institute).
- Always follow the floor manufacturers requirements and specifications regarding subfloor preparation.

General installation instructions



Preparations in the room:

Measure the center of the room. Calculate where to put the installation line. Draw the installation line on the subfloor.
Note! The installation needs to be straight and 90° to the center line (C) of the floor.

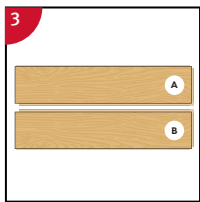


Calculate the number of needed starting triangles:

Measure the length of the wall where you intend to start. Add X mm and divide the length by Y mm.

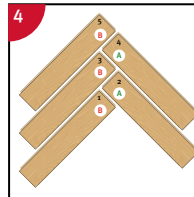
Example:

Wall length = 5,300 + X mm (50 mm) = 5,350 mm
5,350 mm divided by Y mm (976 mm) = 5,48
Next full number = 6
Build 6 starting triangles.

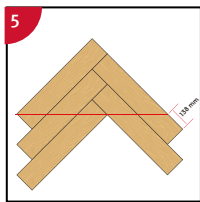


Build starting triangles:

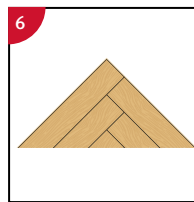
Separate A and B-planks



Take B-planks (Red) and A-planks (Green) and install them as follows.

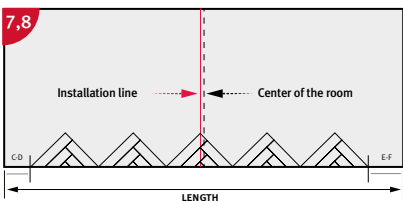


Cut the triangle according to the line indicated below. Depending on the kind of saw that you use, it may be useful to dismantle the triangle before sawing.
The excess (below the line) is to be saved.



In case you have calculated and built an uneven number of triangles, leave the outer two triangles aside. Lay out the middle triangles with their long side towards the starting wall. Make sure the underlayment is installed beforehand and the installation line remains visible.

For the case that you have built an even number of triangles, lay one aside.

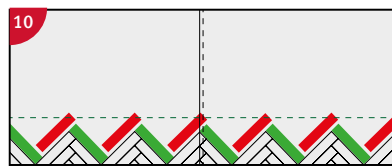
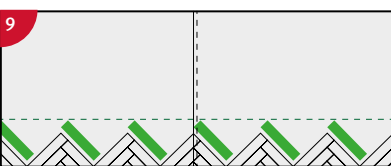


Installation:

Check the straightness of the starting wall. If is not 90° to the center line, the starting triangles need to be adjusted.

Make sure the top of the centered triangle is on the installation line.

Now cut the distances C-D and E-F from the remaining triangle(s), and position them.

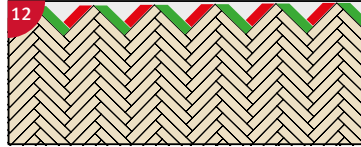
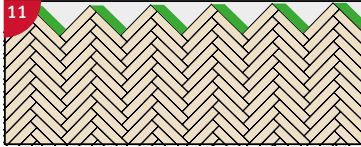


Install A-planks (Green) to connect the triangles. Cut the most left piece to fit into the room, considering an expansion gap. Measure the straightness of the installation along the green line (use a straightedge).

Now, install B-planks (Red) and cut the most right piece to size. This alternating installation of A-planks and B-planks continues throughout the whole room. Note! Follow the installation line.

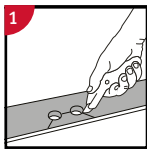


Herringbone Installation instructions for Wood



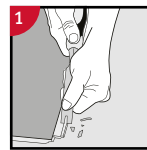
The last rows:
Dismantle the excess material from the triangles.
Use it to close the open gaps to the finishing wall.
Use the leftover from planks 1, 2, etc. consecutively and cut to size if necessary.

Installation around radiator/heating pipes



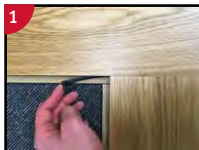
Drill holes two times larger than the diameter of the pipes. Remove a piece of the panel with a utility knife. Put the panel on one side of the pipes and the removed piece on the other side.

When angling is not possible



Remove the locking element according to the picture and use glue to connect the planks

Dismantling panels



Use the releasing tool. Press it into the groove as far as possible. It pushes back the flexible tongue and releases the plank for dismantling.