

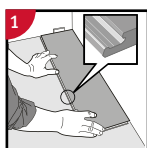


Installation instructions for Wood

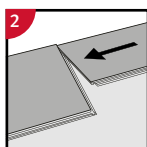
Important information

- The flooring must be acclimated a minimum of 24 to 48 hours prior to installation in the room where the installation will take place
- In rooms larger than 12 x 18 m (225 m²), the flooring must be installed in smaller sections with expansion joints
- The distance to walls and other permanent pieces of construction elements (such as pillars and kitchen islands) should be approximately 1,5 mm per meter of the length and width of the floor (width 10 m = 15 mm expansion gap).
- Never install very heavy pieces of furniture such as kitchen islands/cabinets on top of the flooring
- The indoor climate should have a temperature between 15-23 ° C and relative air humidity between 30-60% (according to Swedish Standards Institute).
- Always follow the floor manufacturers requirements and specifications regarding subfloor preparation.

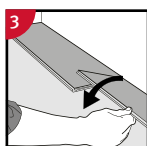
General installation instructions



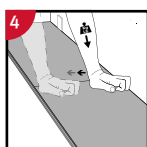
1 First plank, first row.
Place a spacer with predicted thickness to the left and position the panel against the wall.
Later, after 3 rows, you can easily position the flooring against the front wall with predicted spacers.



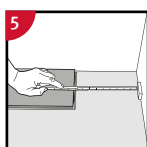
2 Second plank, first row.
Place this panel gently close to the short end of the first one.



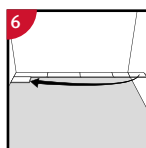
3 When folding down it is important to start from the corner closest to the previous row, folding down towards the center, and continue towards the opposite long side. During the fold down, make sure the panels are close to each other.



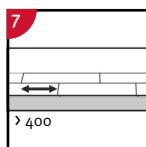
4 Afterwards press slightly along the short end just installed.



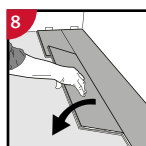
5 At the end of the first row, put a spacer to the wall and measure the length of the last panel to fit.



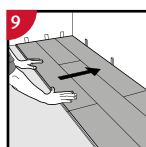
6 Second row
First panel min length > 400 mm.
Put a spacer against the left wall.



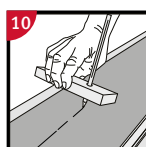
7 Staggered joint distance i.e. minimum distance between short ends of panels in parallel rows shall not be less than the given length.



8 Second plank second row.
Place the panel gently and close to the short end of the previous panel and fold it down in a single action movement.

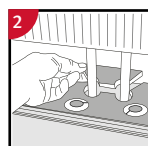
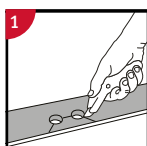


9 After 2-3 rows.
Adjust the distance to the front wall by placing spacers.



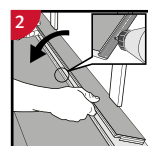
10 Last row (and perhaps also first row).
Minimum width 50 mm. Place a spacer to the wall before measuring. Make a simple drawing tool (piece of wood with a hole) and mark the panel along the wall. Cut the panels lengthwise including the flexible tongues.

Installation around radiator/heating pipes



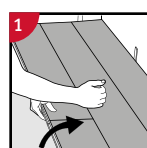
2 Drill holes two times larger than the diameter of the pipes. Remove a piece of the panel with a utility knife. Put the panel on one side of the pipes and the removed piece on the other side.

When angling is not possible



2 Remove the vertical locking part of the strip with a chisel, put applicable glue on the strip and push the panels horizontally together. Place some spacers between last board and the wall.

Dismantling panels



1 Separate the whole row by carefully lifting up and release the whole row.

Fold up the row and release the whole long side.



2 Disassemble the panels by sliding the short ends horizontally.

Never fold up a panel, as this damage the profile.