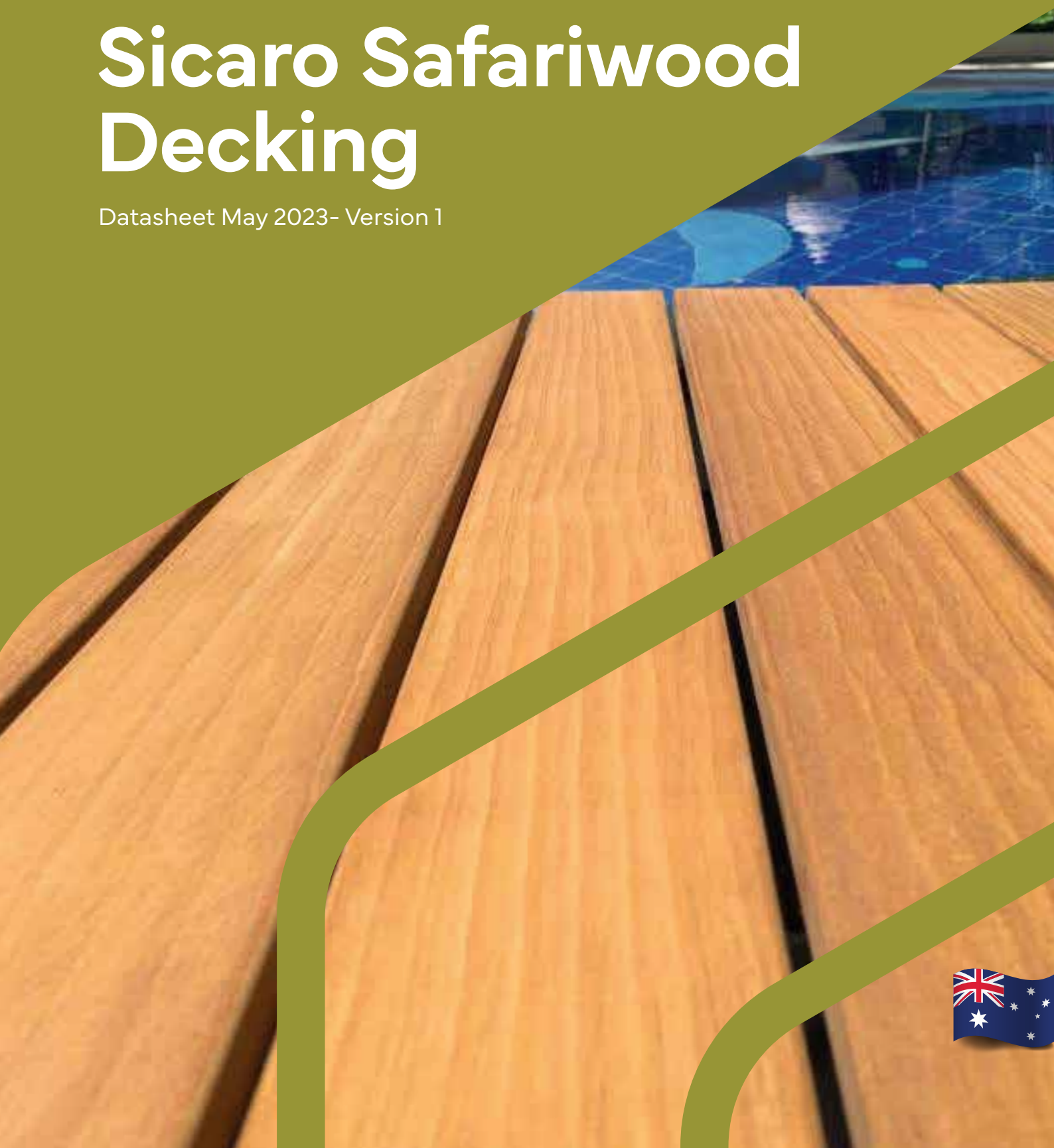




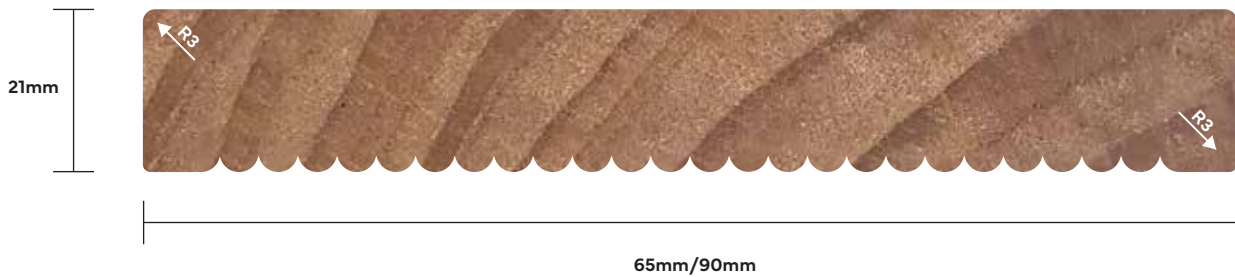
SICARO

Sicaro Safariwood Decking

Datasheet May 2023- Version 1



Product codes: S-SWD-7521-01-AB/C S-SWD-9021-01-AA/C
S-SWD-9021-01-AB/C S-SWD-11521-01-AA/C



Product description

Sicaro products are made from sustainable FSC certified New Zealand Radiata timber that has been fortified using proprietary water-based formulations impregnated all the way through the timber and when cured provide locked in weight, strength, hardness, colour and durability without the use of any biocides.

Sicaro Safariwood is a quartersawn product and will have a straight grain appearance.

Profile:	Smooth topside, 3mm eased edged, reeded underside
Dimensions:	65mm wide x 21mm, 90mm x 21mm
Standard lengths:	2.4metres – 4.8metres full length, defect free face
Cupping:	Maximum 1% of width
Moisture content:	8-12% from production
A/B faced decking:	Both faces may occasionally have surface cracks or pitch pockets but this will not effect the performance of the product. The reverse side of the board may have a colour blemish, rough finish or production marks but this will not effect the performance of the product.
A/A faced boards:	Both faces may occasionally have a surface cracks or pitch pockets but this will not effect the performance of the product which we recommend is always installed reeded side down.

Technical data

Density:	690 kgs per cubic metre
Hardness:	6.6kN Janka scale
Durability:	Very Durable, Class 1 outdoors above ground to CEN/TS 15083-1
Use class:	Class 3 outdoors above ground
Movement:	Tangential 0.55%, Radial 0.65% wet to dry
Emissions:	Super E0 when tested to EN ISO 12460-5:2015
Slip resistance dry:	Classification - D1, Mean COF rounded to 0.05 - 0.75 when tested to AS 4586-2013
Slip resistance wet:	Classification - P4, Pendulum Mean - 45 when tested to AS 4586-2013
Environment:	Sicaro contains no added biocides; any waste product can be handled as ordinary wood.



Recycle

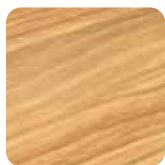


Non Toxic Recyclable

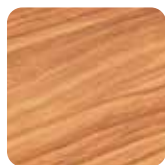


Sustainable Sources

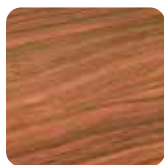
Colours



Cerdin
light bright maple



Ticari
warm golden teak



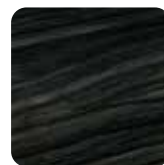
Estera
earthy red cedar



Livada
rich brown rosewood



Storno
deep silver grey



Azarac
dark strong ebony

Colour Maturation

The timber fortification process locks performance and colour all the way through to the core of all Sicaro product and without a protective coating Sicaro products will mature to a grey patina over time.

These images show Sicaro Ticari once installed, the same product 2 years later and then washed 3 years after installation without any protective treatment being applied. Please note that after cleaning unprotected product colour will be revealed although the tone will have changed compared to newly installed product. This colour change is determined by environmental factors and will therefore differ from region to region and application to application with exposure to the elements over the product service life.



Ticari newly installed

Ticari aged after 2 years installation

Ticari washed after 3 years installation

Caring for your Sicaro products

If your Sicaro products have been left to silver they can be washed or lightly sanded to reveal colour that can be enhanced and protected using a good quality oil. It is recommended that only penetrating products are used especially on decking to prevent a surface film that could reduce the products grip resistance when wet.

Where an oil has been applied during installation then re-coating will be required in accordance with the coating supplier's instructions.

However it is important to remember that:

- the quality of surface preparation and the condition of the old coating will determine how good the recoating looks and how well it will last
- take time preparing the surface before re-coating
- better quality coatings will last longer and look better, so spend the money to buy the best coating product you can afford
- apply the number of coats recommended by the coating supplier.

Disclaimer

Sicaro products are made from natural timber that will have variation so all technical data is an average.

All products should be installed by an experienced or qualified professional and best practice always followed when installing these products.

The colour of this product will change over time and the manufacturer Biotanex New Zealand Limited can not be held responsible for this however it will not effect the overall performance of the product, additional care and maintenance guides are available at sicaro.info

This information relates specifically to the products listed and alterations to the specifications may effect the technical performance.

Biotanex New Zealand Limited is continuously working on technology and product development, information in this product datasheet may therefore be changed without further notice.

