



**Woodos.** 

Creators of vintage wooden floors

We love old materials for their authentic charm and we specialise in ageing French oak to achieve that timeworn look. Crafted in our workshops, our patinas are the result of a unique and complex reactive colouring process that requires perfect knowledge of wood. Timeless and inimitable, our aged floors are considered by purists as the most successful to date.



**01 FLOORS**

- A. Manoir
- B. Residence
- C. Campagne
- D. Retro
- E. Old factory

**02 PARQUET FLOORS**

- A. Versailles
- B. Hungarian Point Chevron
- C. Herringbone

**03 STAIRS**

**04 WALL CLADDING**

**05 COLOUR CHART**

**06 REFERENCES**





REF.: 21A

## 01 FLOORS

All our ranges of French oak floors are available in solid wood and semi solid versions (laminated, suitable for underfloor heating systems). The width of our boards ranges between 9 cm and 30 cm, with lengths up to 3 m. When laid, this balanced alternation of widths gives a feeling of great warmth. Whether in an understated contemporary loft or in a period residence, Arbony floors will adapt to all atmospheres and all styles of interior design, always preserving the harmony of the space.





REF.: 07



REF.: 05A



REF.: 5S



REF.: 06

## A. MANOIR

This is a range of authentically aged floors. Random wear marks on the surface of the wood and chipped edges create the thrill that only old materials can provide. The nuances of tints between the planks, as well as the accents of colours or discolourations, around the knots, characterise these absolutely unique boards.





REF.: 5S

A. MANOIR



REF.: 05A





REF.: 105S



REF.:105A



REF.: 107

**B. RESIDENCE**

This flooring range presents a much more contemporary style, obtained by lightly brushing the surface which gives the boards a flat, regular and modern appearance while keeping the authenticity of the colours.

This range of lightly brushed floor delivers an effect that is both contemporary and very warm.



## C. CAMPAGNE

A range of floors aged and distressed by a unique process of natural wear and brushing. It reveals all the elegance in the depth and texture of the grain in this hard and noble wood.



□ C. CAMPAGNE







C. CAMPAGNE







REF.: 30



REF.: 30



REF.: 31



REF.: 30

### D. RETRO

Reproductions of old painted floors aged by time to give them a truly vintage touch. A semi-matte wax oil finish keeps the look of an "old oil painting".









REF.: 950



REF.: 950



REF.: 950

## E. OLD FACTORY

A range of floors made of heartwood that looks in every way like a real salvage floor. Offered with metal inserts, the planks show many cracks, knots, planing marks and old moisture stains.





REF.: 05A

## 02 PARQUET FLOORS

Parquet floors are distinguished from ordinary floors by the designs formed by assemblies of small strips of wood. Choose from the three different styles of parquet we offer: Versailles Panels, Hungarian Point Chevron or Herringbone. All three are available in the different aged wood ranges (Manoir - Residence - Campagne - Old Factory).



REF.: 05A



## A. VERSAILLES

The Versailles panels in solid oak represent a design in the French style found at the King's court, in castles and bourgeois houses. The panels are assembled using the tongues and grooves with no need for glue. These panels, 15 or 20 mm thick, are available in traditional dimensions of 102 x 102 cm or in reduced dimensions of 70 x 70 cm, and can be connected by *navettes* (boards between panels).



REF.: 03



REF.: 10



REF.: 1



REF.: 950





REF.: 05S



REF.: 05A

### B. CHEVRON

Hungarian Point (with the ends of the boards cut at 45°) is a great classic of traditional French parquet and was widely used by the architect Baron Haussmann in prestigious Parisian apartments and mansions. This type of installation gives your interiors a very chic look.



REF.: 05A



REF.: 25



REF.: 05A





REF.: 25



REF.: 14

## C. HERRINGBONE

Typical of old Brussels apartments, the boards of this parquet are cut squarely and, when installed, form a broken line which remains a great classic.



REF.: 05A





REF.: 5S



### 03 STAIRS

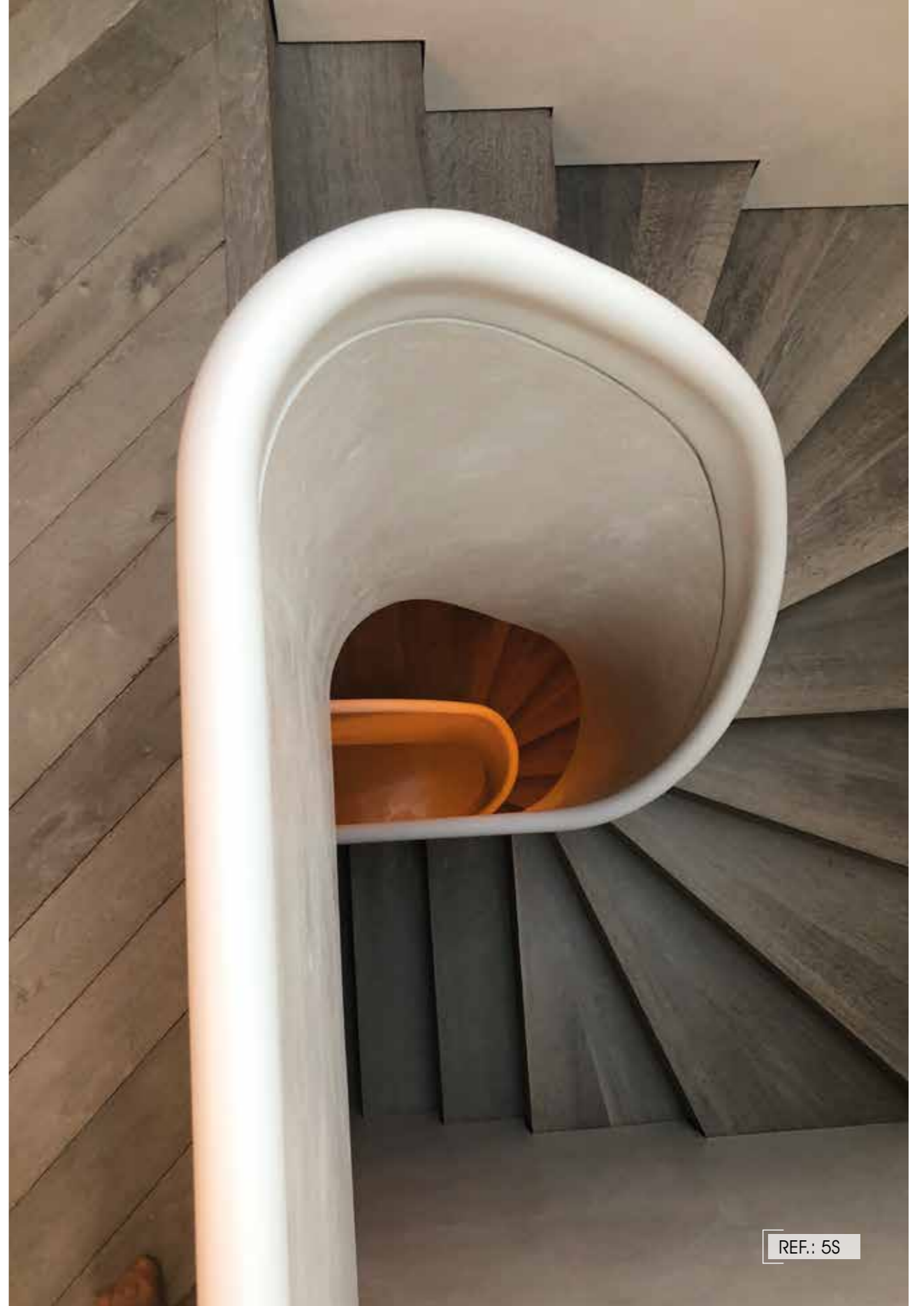
Whether your interior design is modern or classic, our boards will add to the appearance of your stairs, either to give the impression of thick, solid wood steps or to add elegance to very simple stairs, with or without risers.

REF.: 21A





REF.: 05A

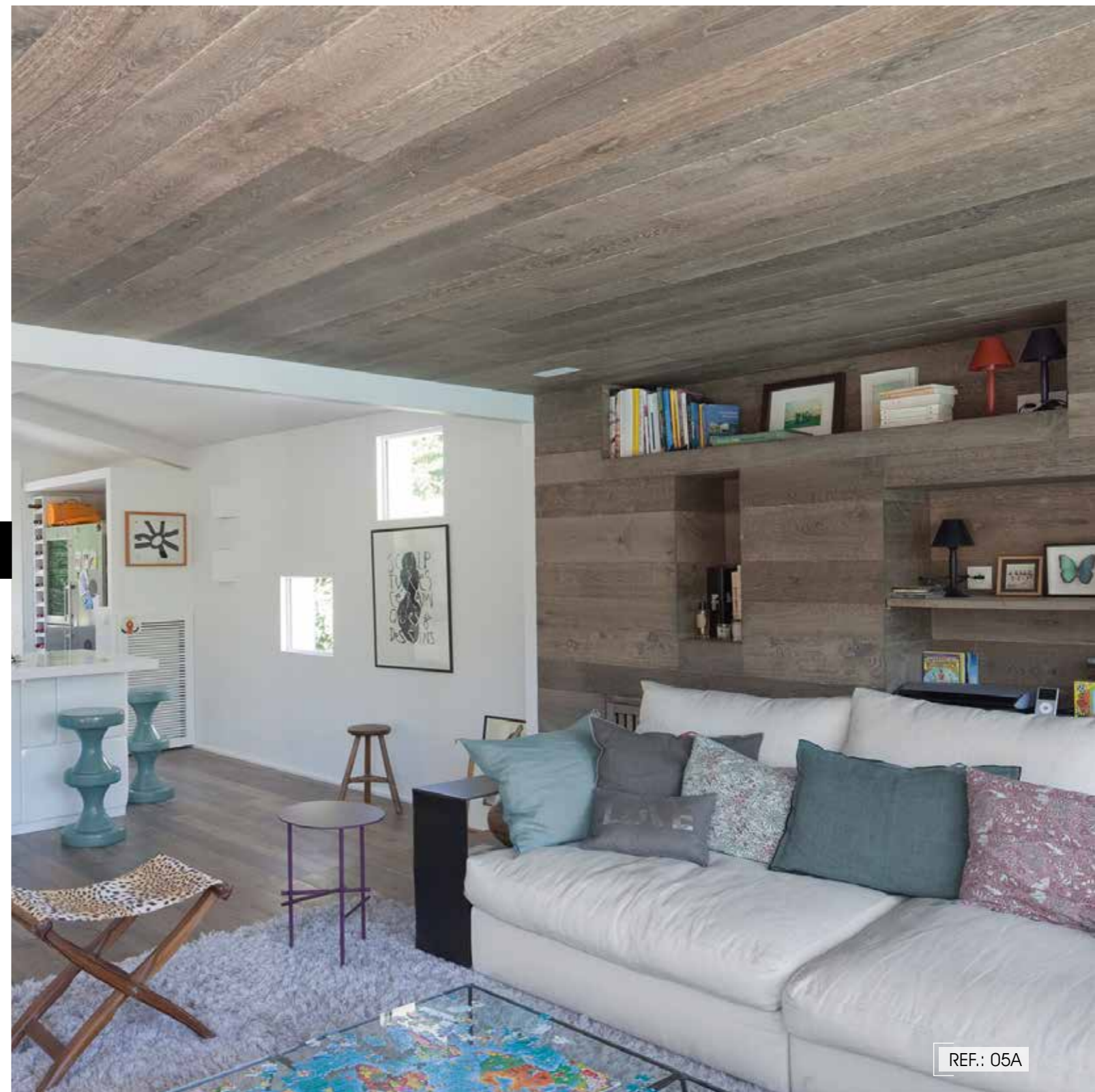


REF.: 5S



## 04 WALL CLADDING

In the same way that we cover your floors, we can cover your walls and ceilings according to your inspirations.



REF.: 05A



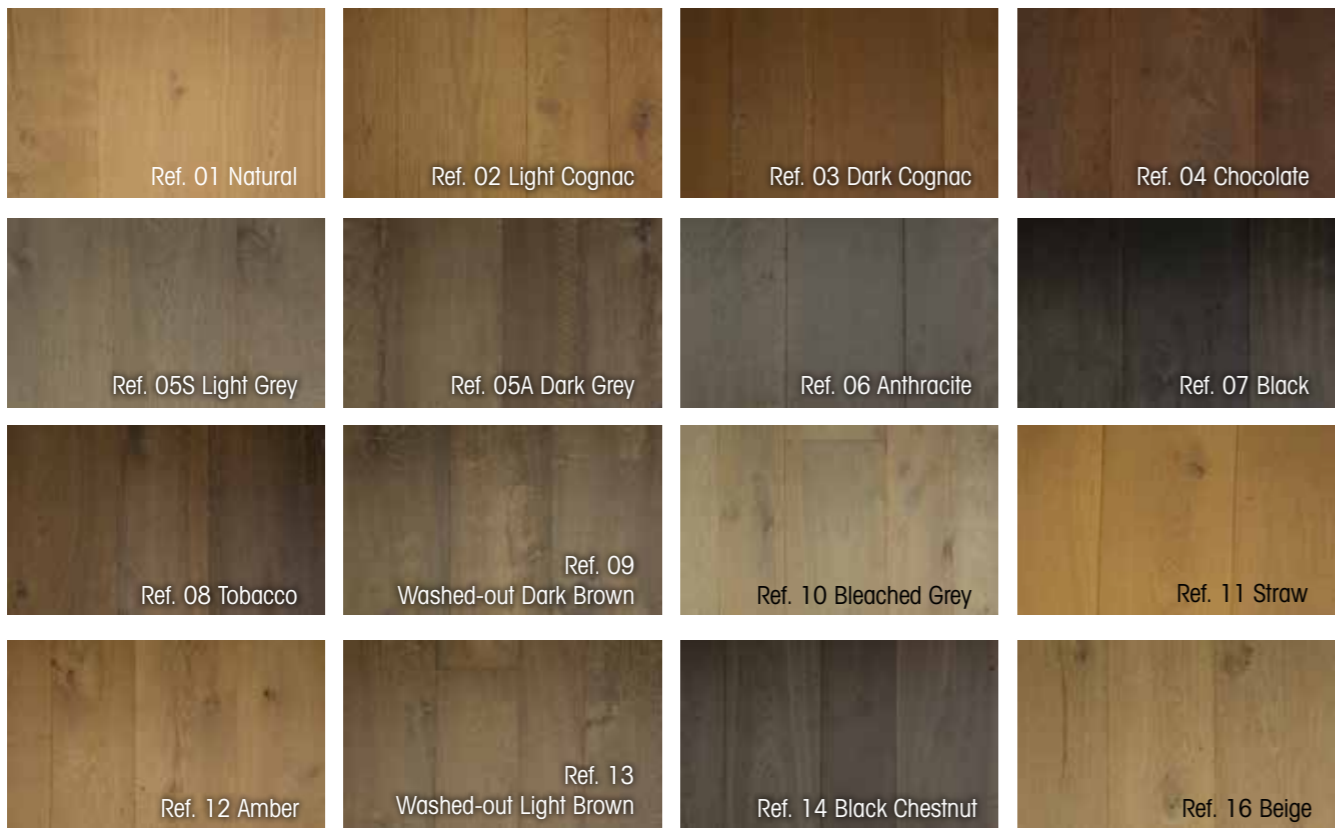
04 WALL CLADDING



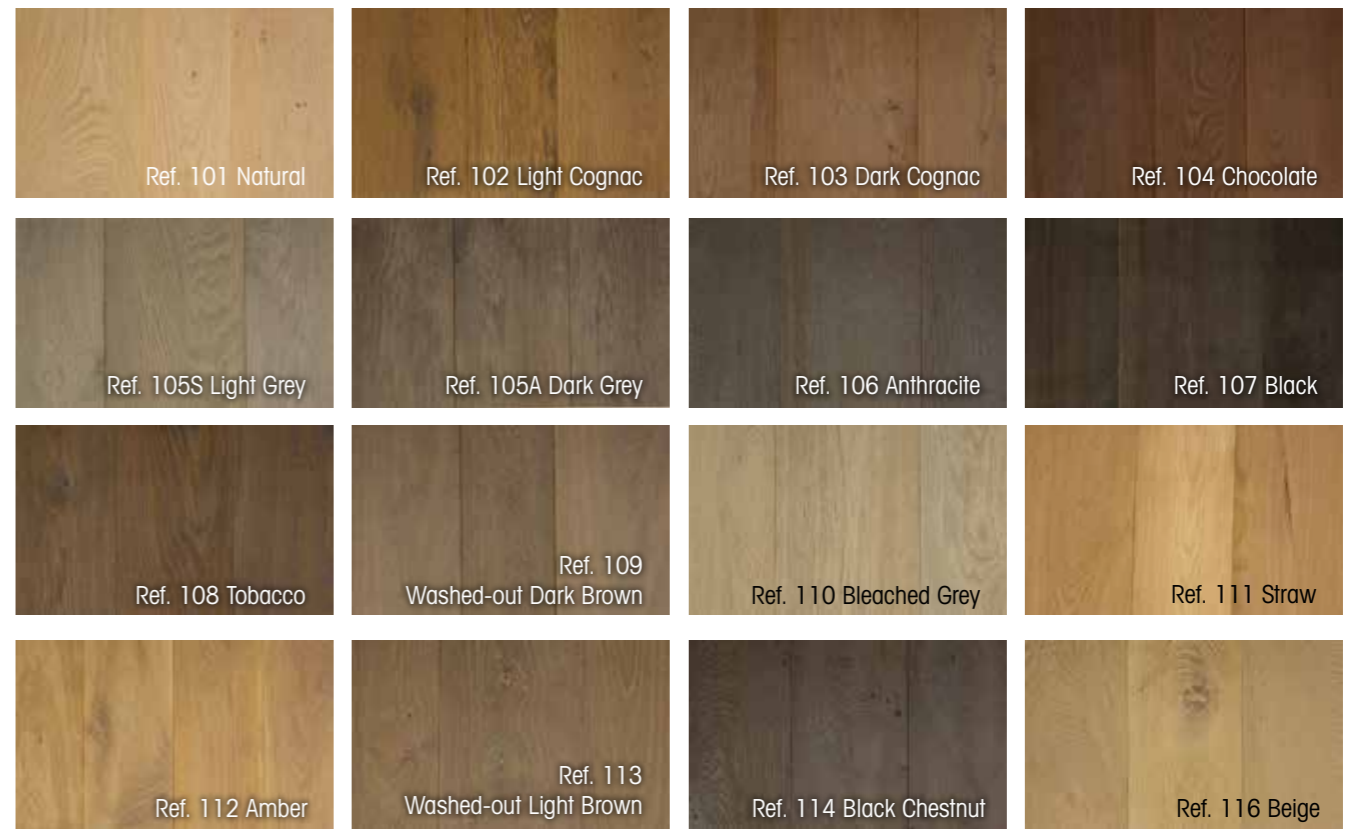


# 05 COLOUR CHART

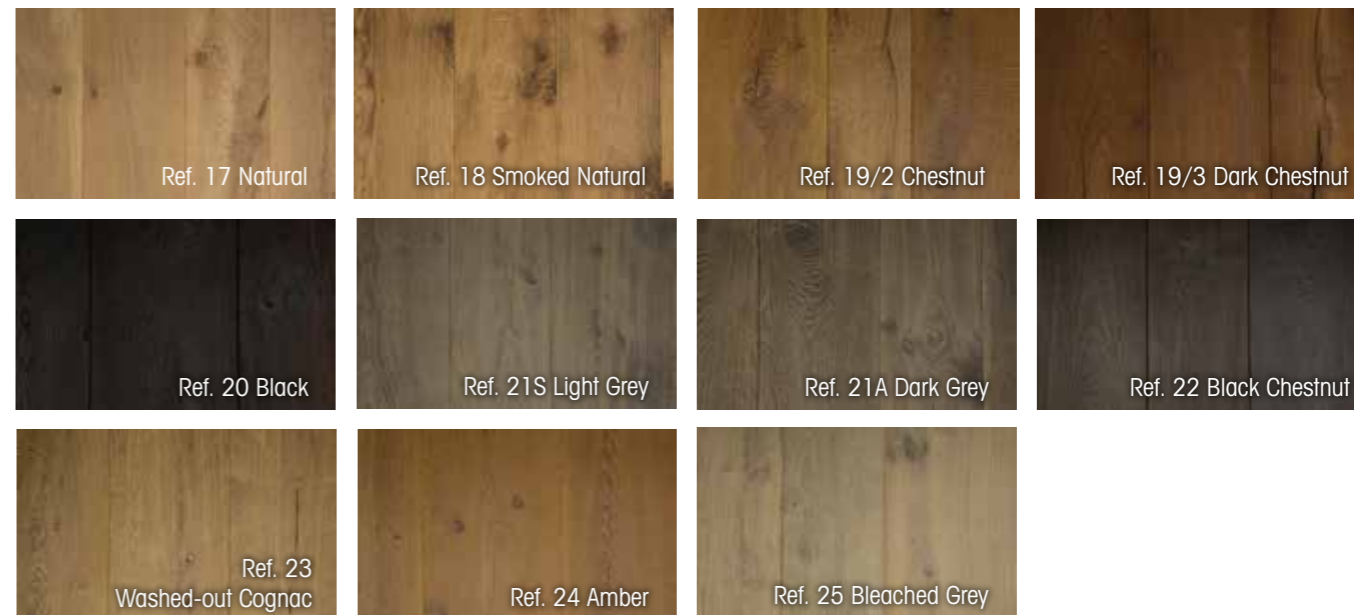
Ref 1 to 16: **MANOIR** Range for aged floors and parquet floors



Ref. 101 to 116: **RESIDENCE** Range for brushed floors and parquet floors



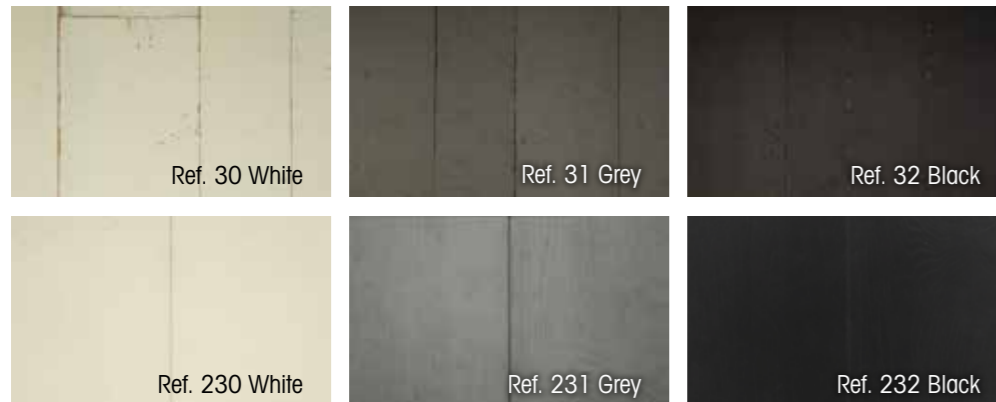
Ref. 17 to 25: **CAMPAGNE** Range for aged/distressed floors and parquet floors



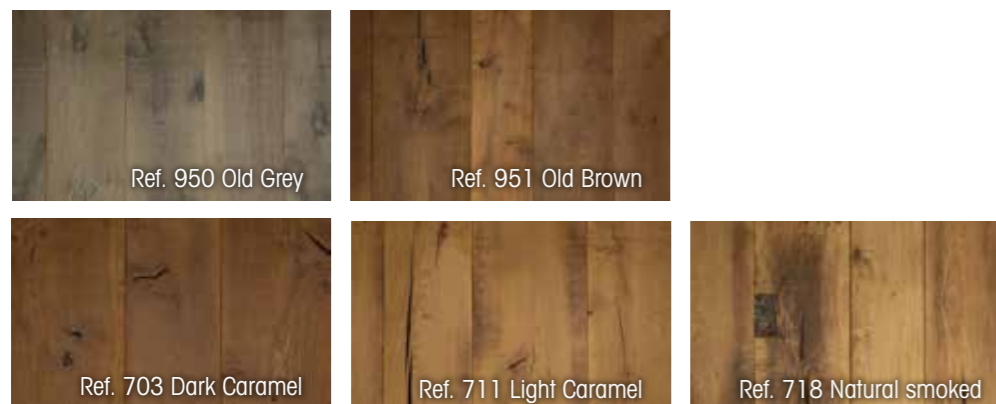


## 05 COLOUR CHART

Ref. 30 to 32: **RETRO** Range for painted floors



Ref. 703, 711, 718, 950, 951 **OLD FACTORY** Range for floors and parquet floors in heartwood



## 06 REFERENCES

- Balmain** Paris, London (Harrods), Shanghai, Moscow, Doha, Seoul,  
New York, Las Vegas, Peking, Montreal, Milan
- Beefbar** Monaco
- Chalets** Switzerland / France
- 55 Croisette** France (Paris)
- Dior Show** Sept. 2016 & 2018 France (Paris)
- Yves Saint-Laurent Show** Feb. 2018 France (Paris)
- Devernois** France (Lille)
- Donaldson** Brussels
- Etam** France
- Flamant** France (Paris)
- Fondation Rosenblum art contemporain** France (Paris)
- Galleries Lafayette** France (Paris)
- Golf Groendael** Netherlands
- Golf Rebetz** France
- Golf Spa** Belgium
- Hotel Le Saint Roch** France (Courchevel)
- Hotel Relais Christine** France (Paris)
- Marie's Corner** Wavre
- Minelli** France
- Mood's** Monaco
- Pain Quotidien** Knokke, Antwerp & Brussels
- Rail House Cafe - Victoria** London
- Restaurant Alcazar** France (Paris)
- Weill Showroom** France (Paris)
- Sonkès** Brussels
- Obumex Stand** Courtrai
- Wine Palace** France (Monaco)
- Zadig & Voltaire** France (Paris)
- Carpenters workshop gallery** London – New York
- Sanglier des Ardennes** Durbuy





WOODOS GROUP

AUSTRALIA  
8 Knox Lane  
Double Bay NSW 2028  
+61 2 96987877  
woodos.com.au

SINGAPORE  
101 Upper Cross Street #05-16  
Singapore 058357  
+65 9226 5395  
woodos.com.sg